

Starting with AxCYCLE Cloud

Introduction

AxCYCLE Cloud is provided as client-server application. The AxCYCLE Cloud server is located in Amazon cloud and AxCYCLE Cloud client is working on user's PC. Server performed cycle calculations and client provided graphical interface to create and edit cycle diagrams. All user data are stored on user's PC.

This configuration is independent of browsers

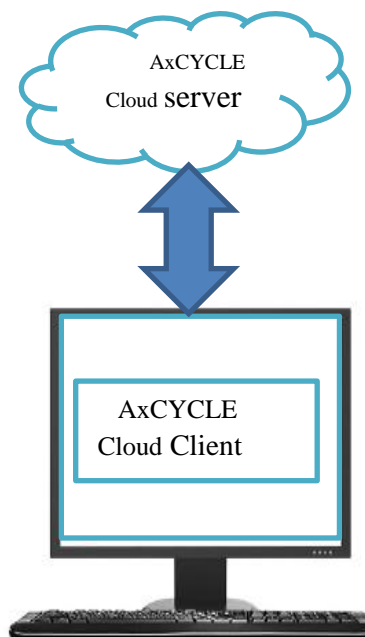
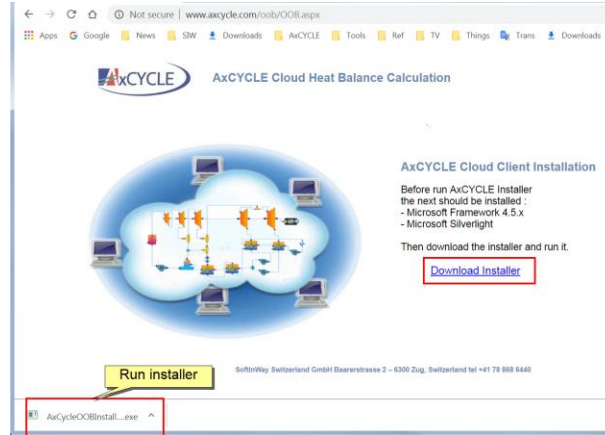


Figure 1 AxCYCLE Cloud architecture

To start with AxCYCLE Cloud it is necessary to load client to user's PC. The client loading is performed in two steps:

1. Open home page of from www.axcycle.com and download client installer

Starting with AxCYCLE Cloud



2. Run Client installer and install Cloud Client on user's PC

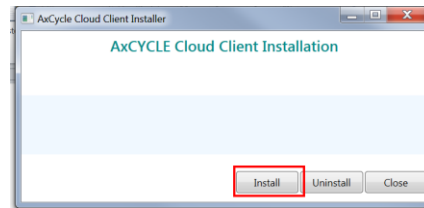


Figure 2 Start Client installation



Figure 3 Finish Client installation

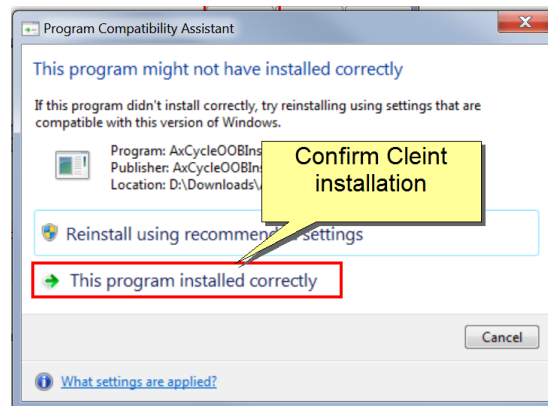


Figure 4 Confirm Client installation



Starting with AxCYCLE Cloud

After successful installation AxCYCLE Cloud start icons appear in Windows Start Menu and Desktop. The user must launch AxCYCLE Cloud using these buttons.



Figure 5 AxCYCLE Cloud start icons in Windows Start Menu and Desktop